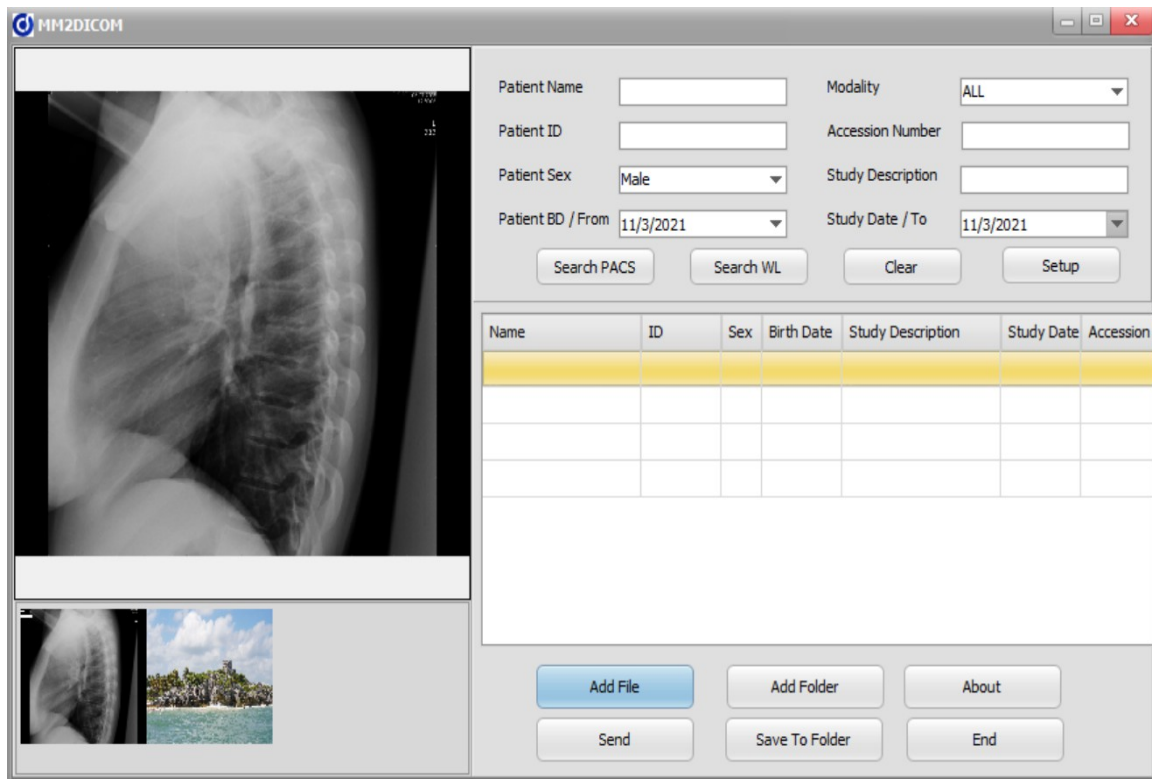


MM2DICOM – MultiMedia to DICOM

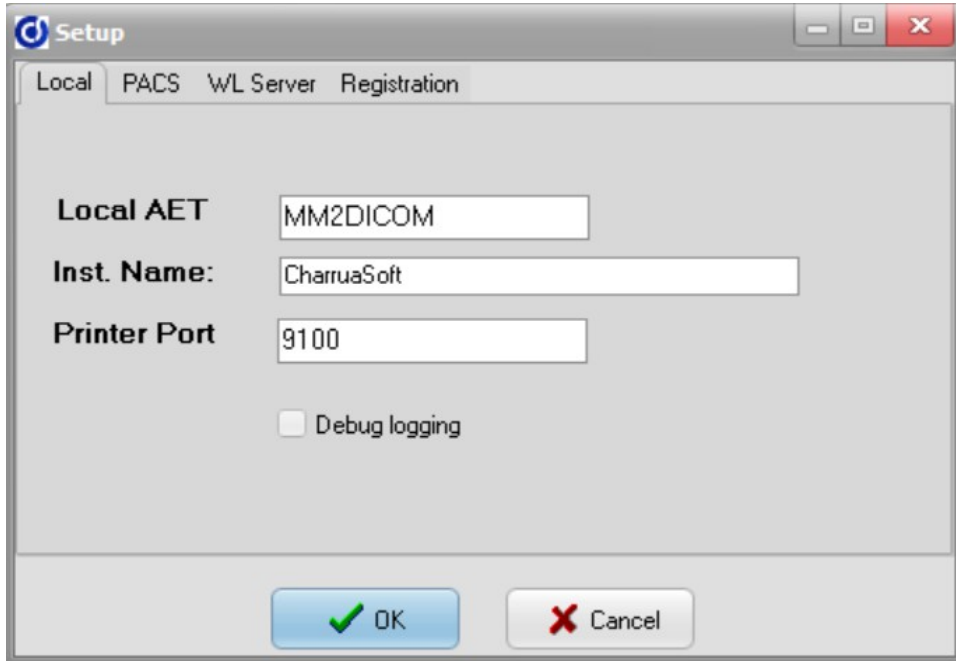


This application converts multimedia files to DICOM. It can convert JPEG, Bitmap or PNG images, Word, RTF or HTML documents and also PDF or MP4 files.

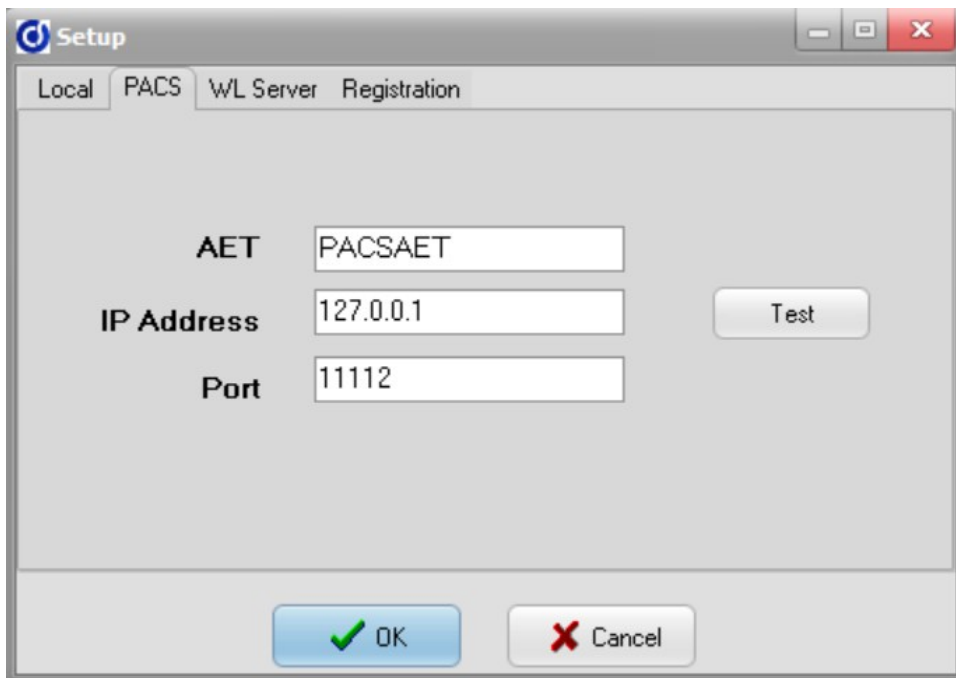
Patient information is added manually or querying the PACS or Worklist servers. For querying the user can use the filters such as surname, study date or modality. Then it selects the study from the list and MM2DICOM will use the information to dicomize the objects.

MM2DICOM also installs a virtual printer XPS2DICOM, then the user will be able to print from any Windows application (MS-Word, MS-Excel, etc.) to the virtual printer, from the printer a PDF is sent to MM2DICOM.

Configuration.

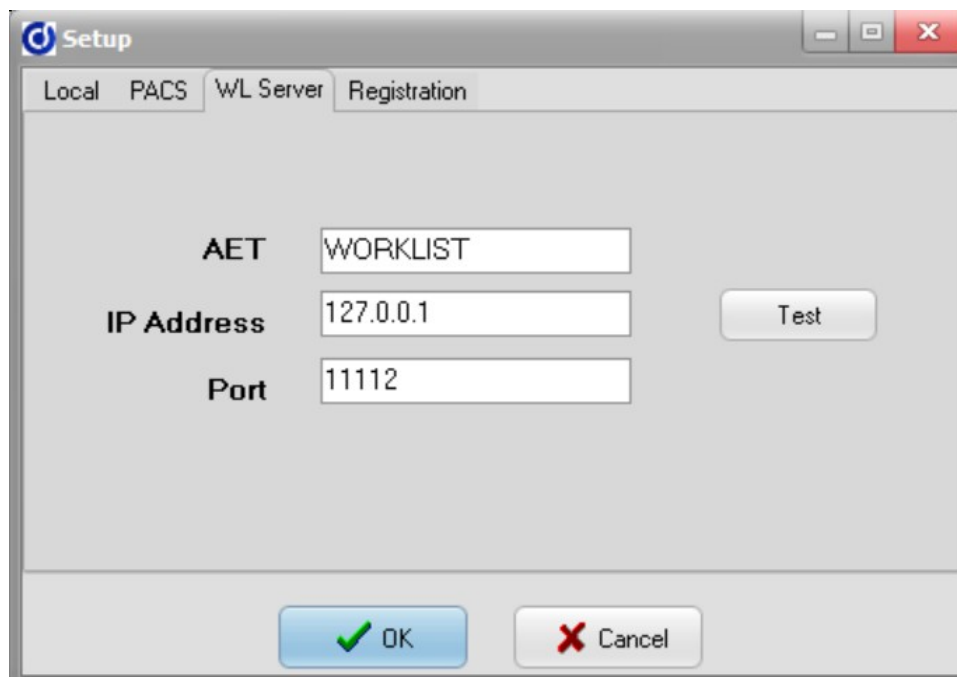


Local settings are configured here, DICOM AET, “Institution Name” for the DICOM conversion, and also the LPR port for the XPS2DICOM printer.



This is the remote PACS configuration: AET, IP Address and Port Number. The Test Button is for sending a DICOM Echo to the remote PACS.

MM2DICOM – Versión 3.0



This is the remote Worklist configuration: AET, IP Address and Port Number.
The Test Button is for sending a DICOM Echo to the remote Worklist.

And finally the Registration for activating the application with the license key .
To request a License key it is necessary to send the mm2dicom_register.txt file