

Video Capture System with DICOM conversion

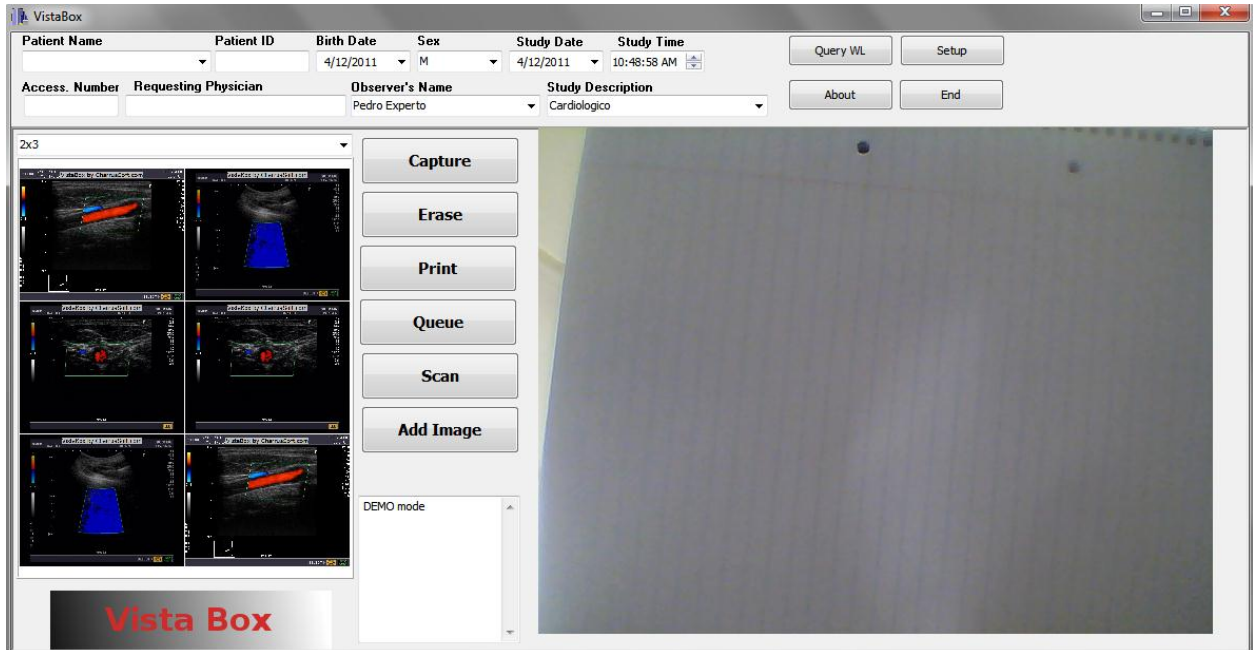
VistaBox

Description

VistaBox is an application for personal computers using MS-Windows, it can capture images from any analog video system (PAL/NTSC standards) from ultrasound systems, C-Arms, or endoscopies.

The system has two components, a PCI frame grabber card compatible with DirectShow API, this card has to be installed inside the PC, and the software, that commands the video capture and does the DICOM conversion.

VistaBox main window.



Characteristics

- **Captures images from video modality.**
VistaBox captures the images and shows them in the PC screen.
- **Creates a DICOM study by entering the patient data manually or by DICOM Modality Worklist.**

Modalities that can be captured:

Ultrasound systems, C-Arms or Endoscopy, every systems that has a standard video output: NTSC/PAL.

Software Specification:

- **Can send pre-formatted prints to Windows or DICOM printers.**
- **Will send captured images to a remote PACS system.**
- **Patient demographics can be input manually or using the DICOM Worklist option.**
- **Will capture the video signal to a preformatted grid with the following formats: 1X1, 2X1, 2X2, 2X3, 3x3 or 3x4.**
- **It will save the last 10 studies to hard disk for re-printing.**

Configuration Window:

The image shows a software configuration window titled "Vista Setup". It has a blue title bar with standard window controls (minimize, maximize, close). Below the title bar is a tabbed interface with five tabs: "Institution", "Study Description", "Inform. Physicians", "Register", and "DICOM". The "DICOM" tab is currently selected. The main area of the window is divided into four sections, each with a title and several input fields:

- Local Setup:** Contains an "AET" field with the value "local" and a "Modality" dropdown menu currently set to "US".
- PACS Server:** Contains an "IP Address" field with "127.0.0.1", a "Port" field with "104", and an "AET" field with "STORESCP".
- WorkList Server:** Contains an "IP Address" field with "127.0.0.1", a "Port" field with "104", and an "AET" field with "WLSCP".
- Print Server:** Contains an "IP Address" field with "127.0.0.1", a "Port" field with "104", and an "AET" field with "PRINTSCP".

At the bottom of the window, there are two buttons: "OK" (with a green checkmark icon) and "Cancel" (with a red X icon).

Contact Information:

info@charruasoft.com
<http://www.charruasoft.com>