

VID2DICOM User Manual

VID2DICOM it's an application for capturing video stills and cine from an analog video source, convert it into DICOM and send it to a DICOM PACS.

It has a DICOM Worklist SCU for loading scheduled studies, avoiding entering the information manually.

Main Screen

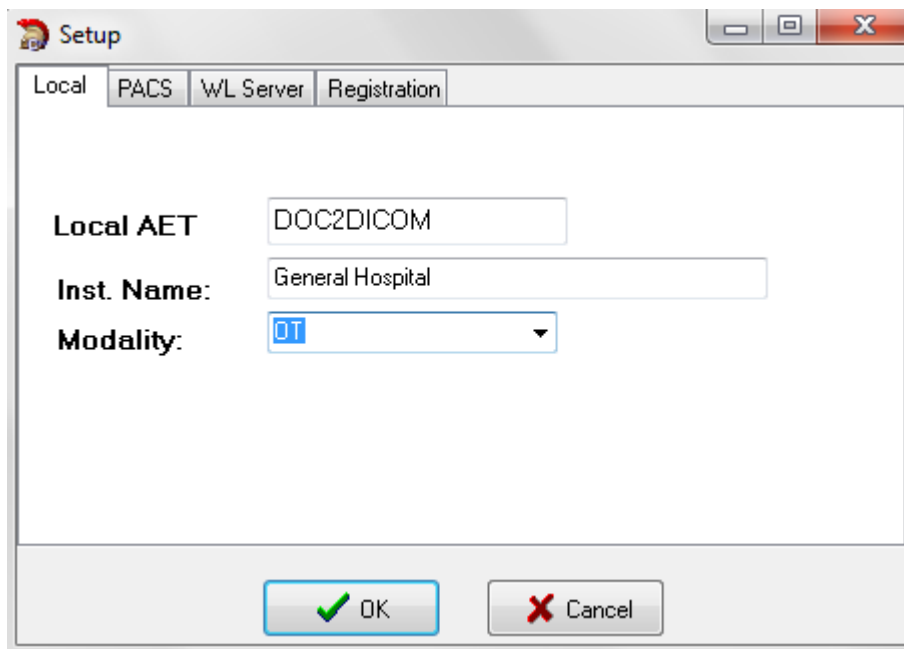
Name	ID	Sex	Birth Date	Study Description	Accession N.	Study Inst

In the main screen patient data can be entered manually or querying the PACS or the Worklist.

It also has an option to read a DICOM dump file.

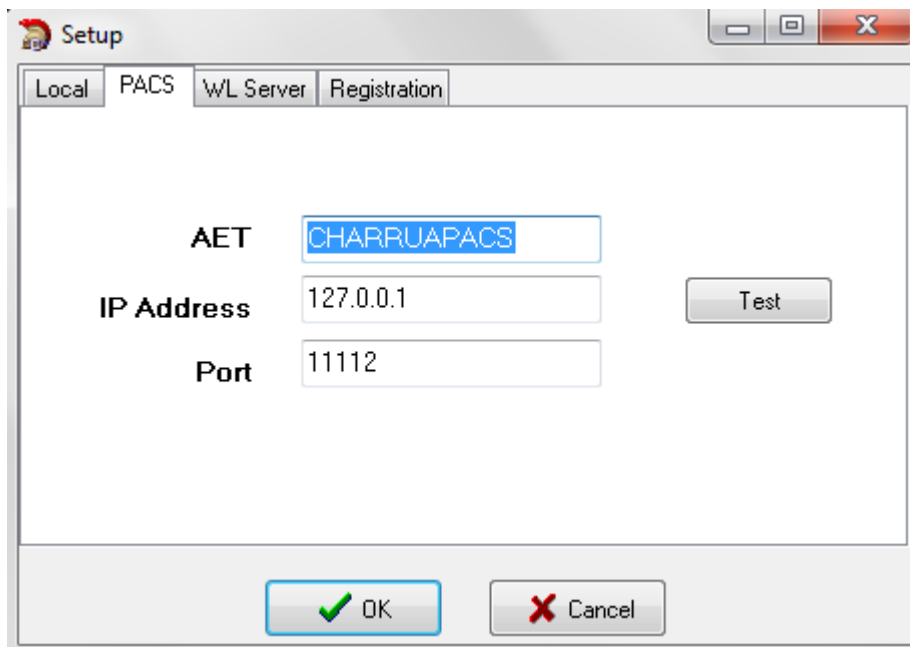
Once the patient demographics are added, the conversion can be selected, with the Acquire Button it enters into the Acquisition Window.

Configuration:



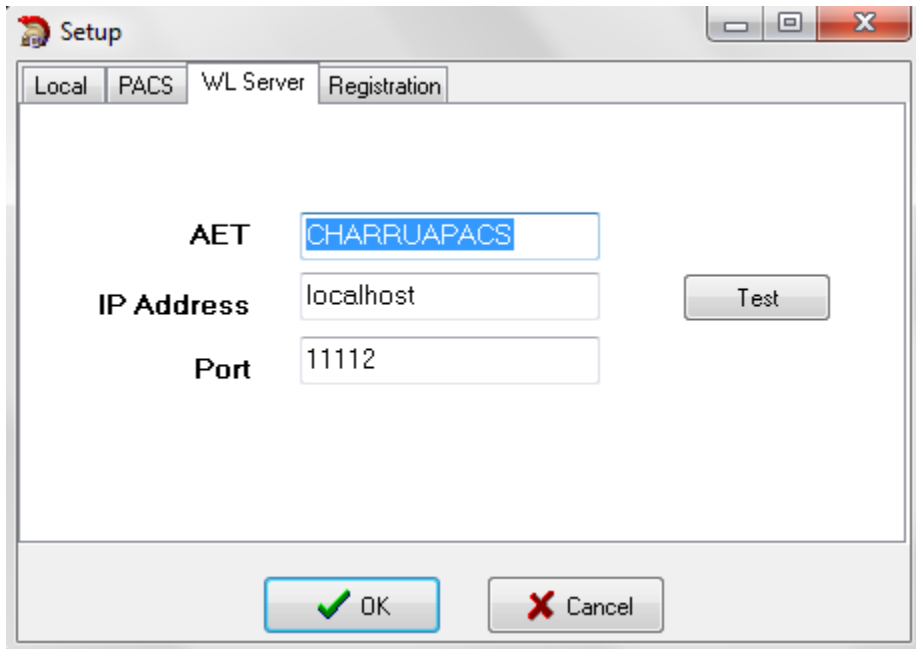
The screenshot shows a 'Setup' dialog box with a 'Local' tab selected. The 'Local AET' field is filled with 'DOC2DICOM', the 'Inst. Name' field with 'General Hospital', and the 'Modality' dropdown menu is set to '01'. At the bottom, there are 'OK' and 'Cancel' buttons.

Local information is set: Application Entity Title, Institution Name and Modality.

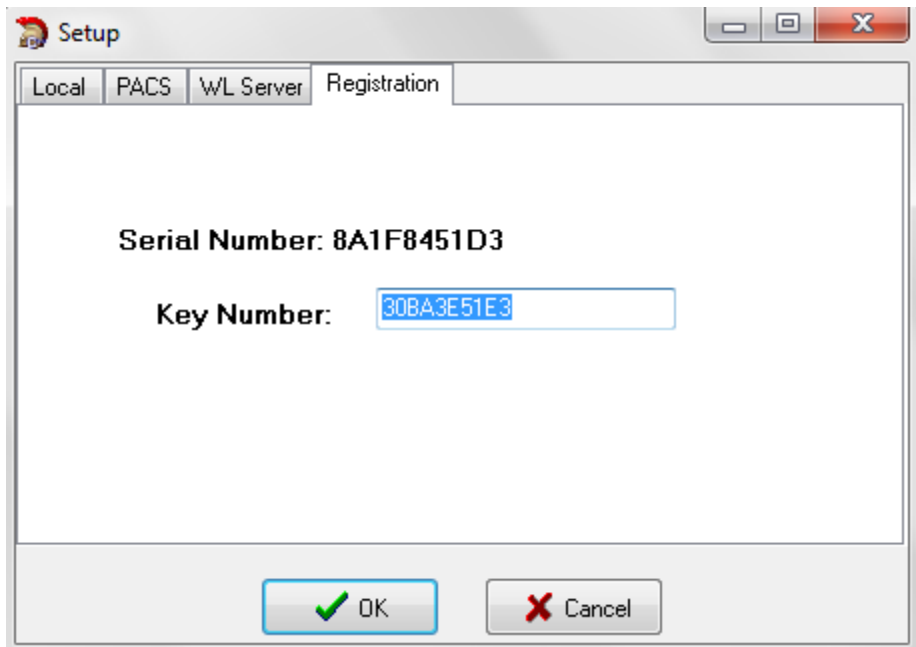


The screenshot shows the 'Setup' dialog box with the 'PACS' tab selected. The 'AET' field is filled with 'CHARRUAPACS', the 'IP Address' field with '127.0.0.1', and the 'Port' field with '11112'. A 'Test' button is located to the right of the IP Address field. At the bottom, there are 'OK' and 'Cancel' buttons.

PACS information is set here: Application Entity Title, IP Address and Port Number. With the Test button a DICOM Echo SCU checks PACS communication.

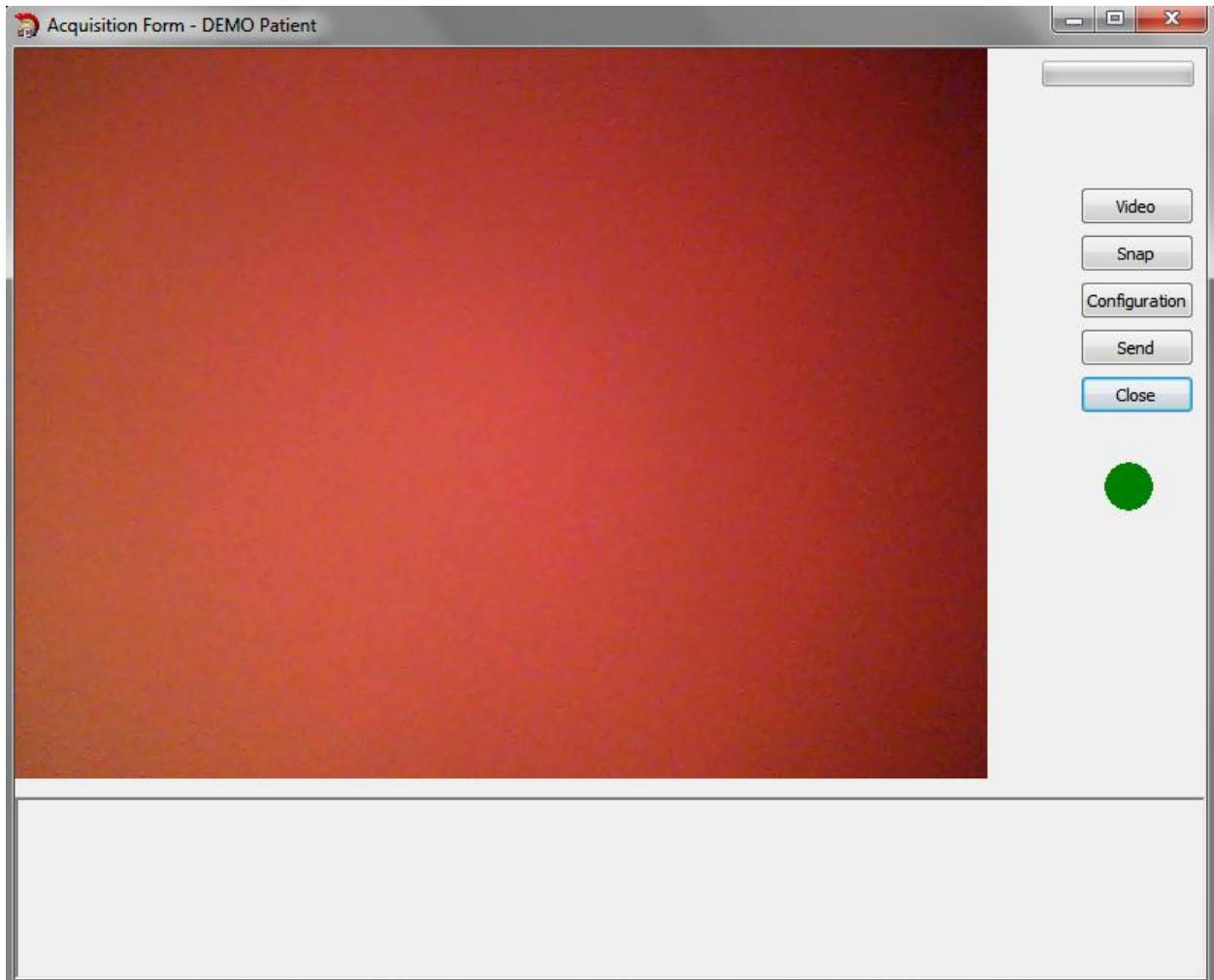


Information for the Worklist Server, Application Entity Title, IP Address and Port Number. With the Test Button a DICOM Echo SCU checks Worklist Communication.



For using this application an activation key is necessary, send us the Serial Number and we will provide the key number.

Acquisition:



The **Video Button** will capture a 5 second video and add it to the thumbnails.

The **Snap Button** will capture a single image.

The **Configuration Button** allows selecting video capture parameters.

Once all the selected images are captured with the **Send Button**, they are converted into DICOM and sent to the PACS system.