

## CharruaSoft DICOM CD-Robot



DICOM CD-Robot is automatic CD DVDs burning system for imaging studies.

It will print the disc cover with the institution logo and patient data.

DICOM CD-robot is based on the Robot Epson PP-100 that records and prints CD / DVDs automatically.

### Workflow:

DICOM CD-Robot receives images with a DICOM Storage SCP server. Detects completion of the transfer with a timeout, and starts the recording process. It burns the studies with a complete DICOM viewer on each CD, this way the referring physician can view the images on any computer.



## Requirements:

- Epson PP-100 CD burning robot.
- Epson Total Disk Manager software.
- Epson TD Bridge software.
- CharruaSoft CD-Robot software.

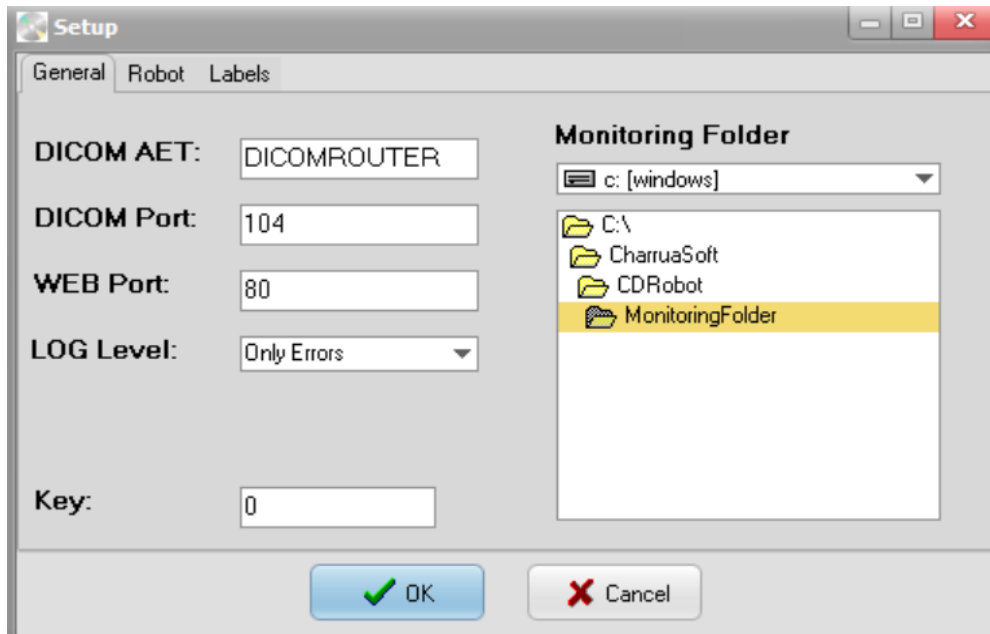
## Installation Process:

1. Install Epson's Total Disk Manager software.
2. Install Epson's TD Bridge software.
3. Install CharruaSoft CD-Robot software.
4. Connect Epson Discproducer to the USB port.
5. Share the same Monitoring folder between TD Bridge and CD-Robot.
6. Configure the AET, IP Address and Port Number for the DICOM Server in CD-Robot in order to send DICOM studies.
7. Send CharruaSoft the **cdrobot\_register.txt** file for activation.
8. In case of trouble send us a full log.

## CD-Robot Installation:

Run the cdrobot\_install.exe, select a destination folder and once the installation process finishes, it will show the CDRobotGUI application.

## Configuration:



**DICOM AET:** Is the application DICOM Name.

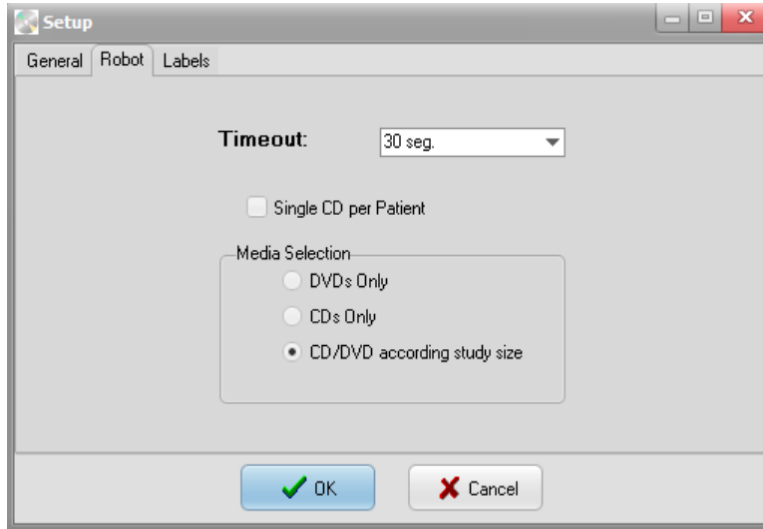
**DICOM Port:** DICOM Server Listening Port number.

**WEB Port:** WEB server listening port number.

**LOG Level:** Log information for troubleshooting purposes.

**Monitoring Folder:** this is the shared folder with Epson robot application software.

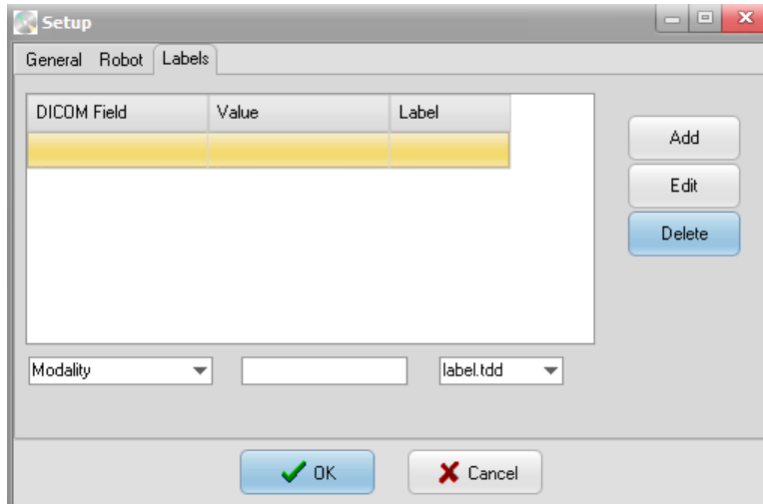
**License key:** the license key for activating the application.



The timeout for receiving studies can be adjusted to 30 sec. 1 min, 2 min or 5 min.

Selecting "Single CD per Patient" will save all studies for the same patient in a single CD.

Media selection can be forced to DVD or CD only, or to select one of them based on study size.



The system can handle multiple labels and select them according to Modality, Study Description, Institution Name or Referring Physician. Matching is partial.

After completing the setup close the CDRobotGUI application, this will start the CDRobotSVC Windows Service.